

Corporate Information

Konishi Co., Ltd.

Corporate Data

Company name	Konishi Co., Ltd.
Establishment	1870
Incorporated	September 25, 1925
Head office	1-7-1 Doshomachi, Chuo-ku, Osaka 541-0045, Japan
Capital	4,603 million yen (as of Mar. 31, 2015)
Fiscal year end	March 31
Number of employees	1,155 persons (consolidated basis) 688 persons (non-consolidated basis) (as of Mar. 31, 2015)
Stock listing	The First Section of the Tokyo Stock Exchange
Securities code	4956

Lines of Business

(1) Manufacturing

Synthetic adhesives, sealants and resins sold under the brand name BOND; floor polishes, detergents and plastic mold-release agents sold under the brand name BOND Wax; industrial tape sold under the brand name BOND Tape; ethanol under the brand name Tsukunami-jirushi; and other products

(2) Sales

Petrochemical products, synthetic resins, industrial chemicals, synthetic adhesives, sealants, floor polishes, mold-release agents, and plastic products

Directors, Corporate Auditors and Executive Officers

(as of June 19, 2015)

**Representative Director*

Chairman and Representative of Konishi Group	Tomoo Ohmaru
President	Takashi Yokota*
Director	Tetsuo Konishi
Director and Managing Executive Officer	Satoru Kusakabe
Director and Executive Officers	Takaya Sudo Shozo Arisawa Koichiro Inoue
Outside Director	Keiko Takase
Standing Corporate Auditor	Masato Togo
Corporate Auditors	Suzuko Takeuchi Hitoshi Karino

Executive Officers	Shoji Noda Hirofumi Matsubata Keiichi Oyama Koichi Nakamura Toshihiko Iwao Hiroaki Kikkawa
---------------------------	---

Major Banks

The Bank of Tokyo-Mitsubishi UFJ, Ltd.
Mitsubishi UFJ Trust and Banking Corporation
Sumitomo Mitsui Banking Corporation

Offices

Osaka Head Office	Kitahama TNK Bldg., 1-7-1 Doshomachi, Chuo-ku, Osaka 541-0045, Japan Phone: 81-6-6228-2811
Tokyo Head Office	Takebashi Square, 2-3 Kandanishiki-cho, Chiyoda-ku, Tokyo 101-0054, Japan Phone: 81-3-5259-5711
Nagoya Branch Office	Bantane Sakae Bldg., 2-4 Shinsakaemachi, Naka-ku, Nagoya, Aichi 460-0004, Japan Phone: 81-52-217-8620
Fukuoka Branch Office	Hiyoshi Bldg., 3-24-24 Shimizu, Minami-ku, Fukuoka, Fukuoka 815-0031, Japan Phone: 81-92-551-1761
Yokohama Branch Office	Shin-yokohama Bousei Bldg., 3-20-12 Shin-yokohama, Kouhoku-ku, Yokohama Kanagawa 222-0033, Japan Phone: 81-45-514-2450
Sapporo Branch Office	Miyamura Bldg., 3-1-1 Kita Hachi-jo Higashi, Higashi-ku, Sapporo, Hokkaido 060-0908, Japan Phone: 81-11-731-0351
Sendai Sales Office	Prime Square Hirose-dori Bldg., 2-9-27 Chuo, Aoba-ku, Sendai, Miyagi 980-0021, Japan Phone: 81-22-211-5031
Tochigi Sales Office	262-9 Shiba, Shimotsuke, Tochigi 329-0412, Japan Phone: 81-285-43-1511
Takasaki Sales Office	32-1 Azuma-cho, Takasaki, Gunma 370-0045, Japan Phone: 81-27-324-3002
Kanazawa Sales Office	M Road Ekinishi 3-16-11 Ekinishihommachi, Kanazawa, Ishikawa 920-0025, Japan Phone: 81-76-223-1565
Hiroshima Sales Office	Koihommachi Bldg., 1-9-12 Koihommachi, Nishi-ku, Hiroshima, Hiroshima 733-0812, Japan Phone: 81-82-507-1911
Takamatsu Sales Office	Takamatsu Tenjinmae bldg., 10-1 Tenjinmae, Takamatsu, Kagawa 760-0018, Japan Phone: 81-87-835-2020
Okinawa Sales Office	3-19-35 Makabi, Naha, Okinawa 902-0068, Japan Phone: 81-98-884-7521

Manufacturing Facilities

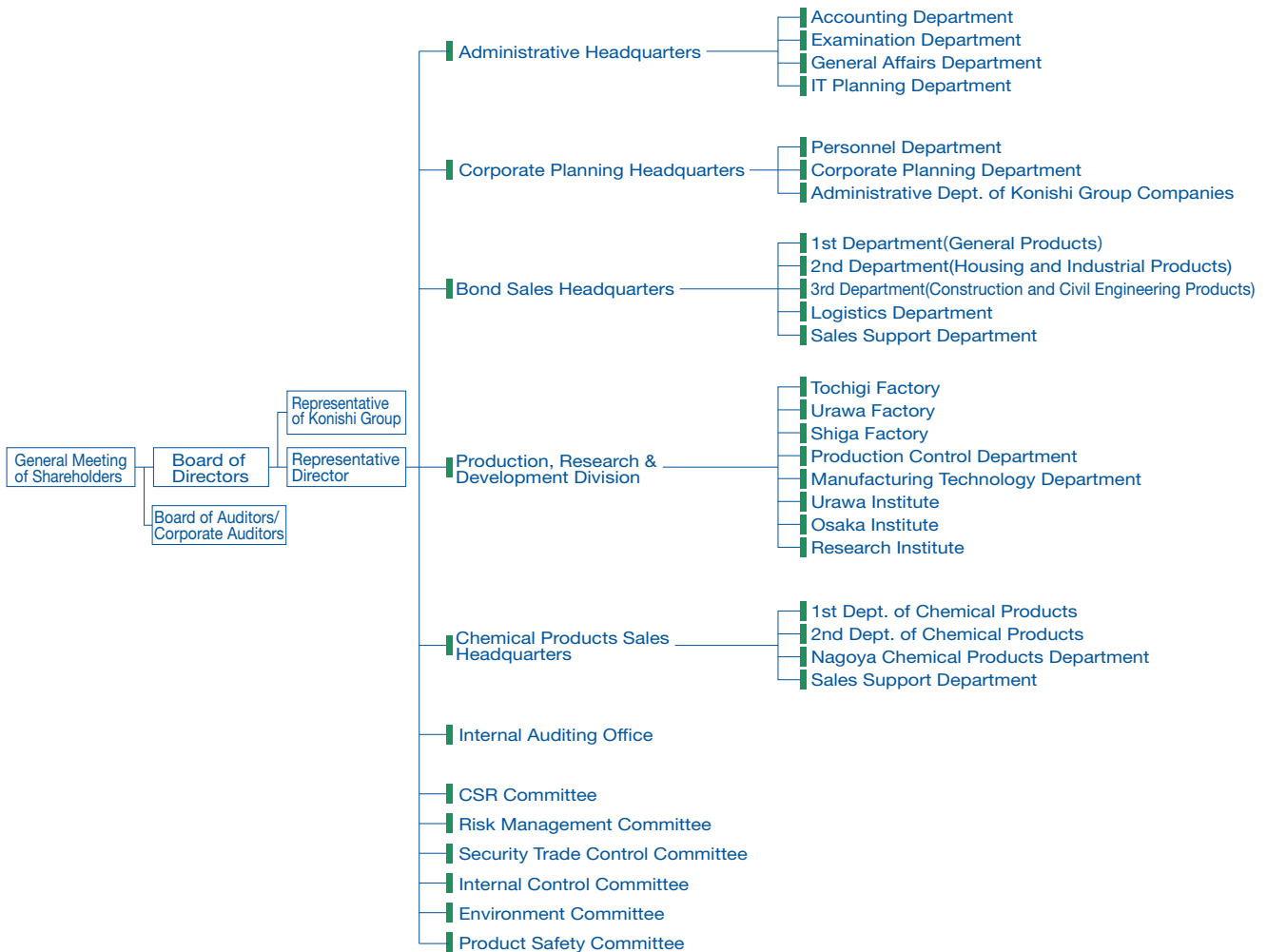
Tochigi Factory	262-6 Shiba, Shimotsuke, Tochigi 329-0412, Japan Phone: 81-285-44-5222
Urawa Factory	5-3-35 Nishibori, Sakura-ku, Saitama, Saitama 338-0832, Japan Phone: 81-48-862-5111
Shiga Factory	Minakuchi Industrial Estate, 1-12 Sasagaoka, Minakuchi-cho, Koka, Shiga 528-0061, Japan Phone: 81-748-62-4340

Research Facilities

Urawa Institute	5-3-35 Nishibori, Sakura-ku, Saitama, Saitama 338-0832, Japan Phone: 81-48-838-6072
Research Institute	5-3-35 Nishibori, Sakura-ku, Saitama, Saitama 338-0832, Japan Phone: 81-48-838-6072
Osaka Institute	4-7-9 Tsurumi, Tsurumi-ku, Osaka 538-0053, Japan Phone: 81-6-6939-3321

Logistics Center

Tochigi Logistics Center	262-9 Shiba, Shimotsuke, Tochigi 329-0412, Japan Phone: 81-285-40-0881
Shiga Logistics Center	3 Hinokigaoka, Minakuchi-cho, Koka, Shiga 528-0068, Japan Phone: 81-748-70-2153



Affiliated Companies

Japan

- Minakuchi Chemical Industry Co., Ltd.**
Packing of general-purpose consumer adhesives
- Bond Chemical Co., Ltd.**
Purchase and sales of raw materials for adhesives, sealants and floor polishes
- Bond Engineering Co., Ltd.**
Contracting and execution of civil engineering and construction work using adhesives
- Bond Sales Co., Ltd.**
Sales of adhesives, sealants, floor polishes and related equipment
- Bond Logistics Co.,Ltd.**
Warehouse management of adhesives and sealants
- Japan Chemical Database Ltd.**
Chemical database business, and sales of software
- Yazawa Kagaku Kogyo Co., Ltd.**
Manufacturing and sales of putty and adhesives for wallpaper and fittings
- Sunrise MSI Corporation**
Manufacturing and sales of sealants
- Kinki Reinforced Concrete Co., Ltd.**
Laying of slabs for steel superstructures for road and railroad bridges
- Maruyasu & Co., Ltd.**
Sales of industrial chemicals, materials for electronic parts, and raw materials for pharmaceuticals
- Konishi Kouei Co., Ltd.**
Contracting and execution of civil engineering and construction work using adhesives

Overseas

- China**
- Konishi Co., Ltd. Shanghai**
International trade, intermediary trade, inter-company trade in free-trade zones, and trade agent services
- Keyang Fine Chemical (Suzhou) Co., Ltd.**
Manufacturing and sales of adhesives and sealants

Taiwan

- Taiwan Maruyasu & Co., Ltd.**
Sales of industrial chemicals, materials for electronic parts, and raw materials for cosmetic products

Thailand

- Kony Sunrise Trading Co., Ltd.**
Sales of industrial chemicals, synthetic resins and adhesives

India

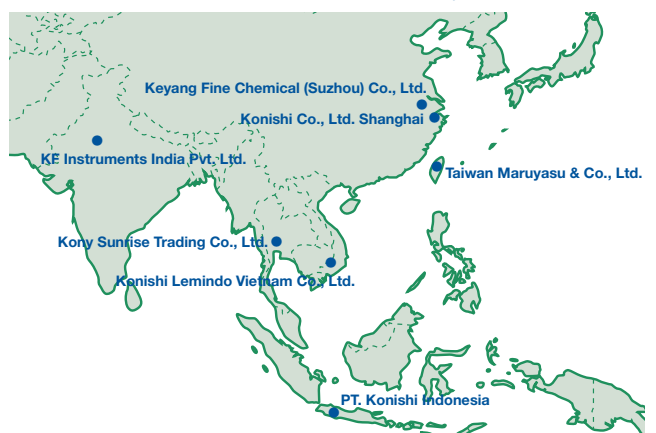
- KF Instruments India Pvt.Ltd.**
Manufacturing of precision molding components, and import, export and sales of procured materials

Vietnam

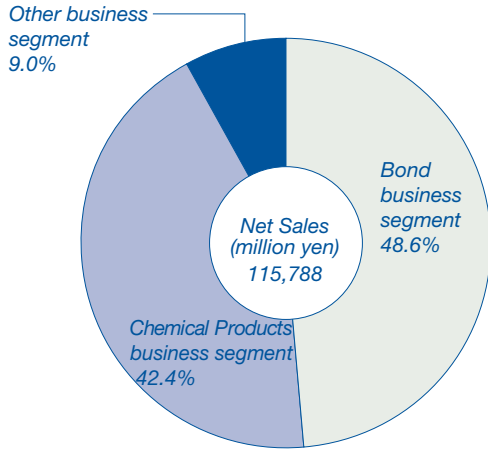
- Konishi Lemindo Vietnam Co., Ltd.**
Manufacturing and Sales of Adhesives

Indonesia

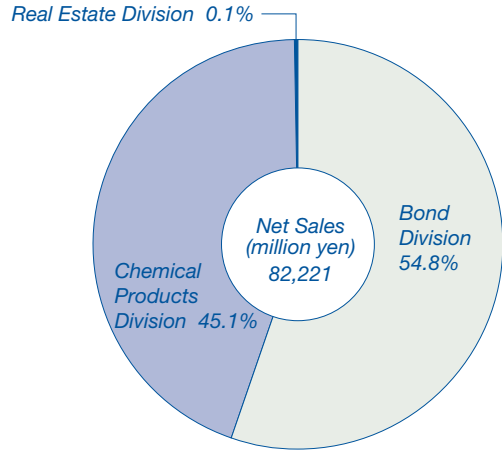
- PT. Konishi Indonesia**
The import, export, and sales of adhesives, paints, and their raw materials, and the import, export, and sales of synthetic resins



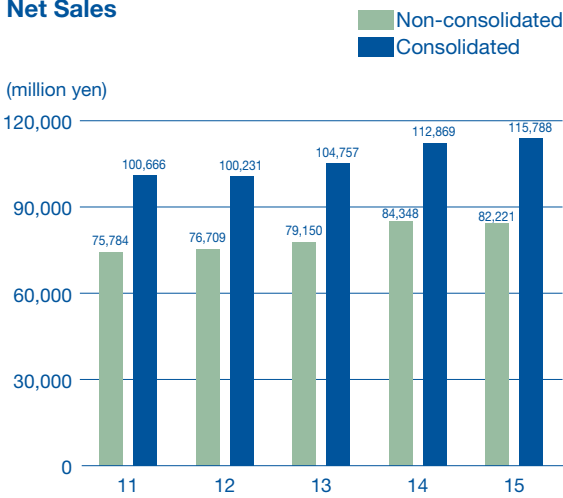
Breakdown of Sales by Business Segment
(consolidated basis;
fiscal year ended March 31, 2015)



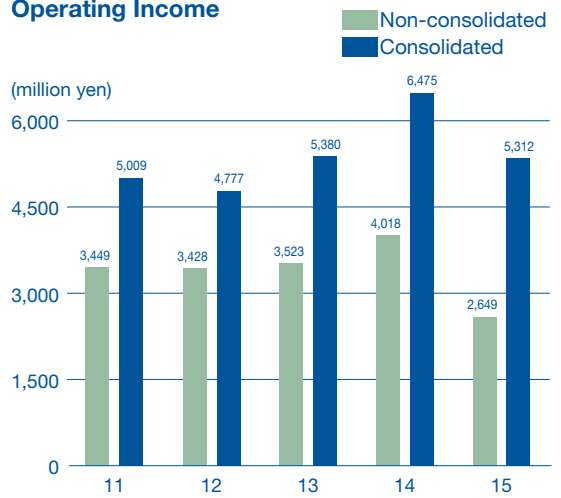
Breakdown of Sales by Division
(non-consolidated basis;
fiscal year ended March 31, 2015)



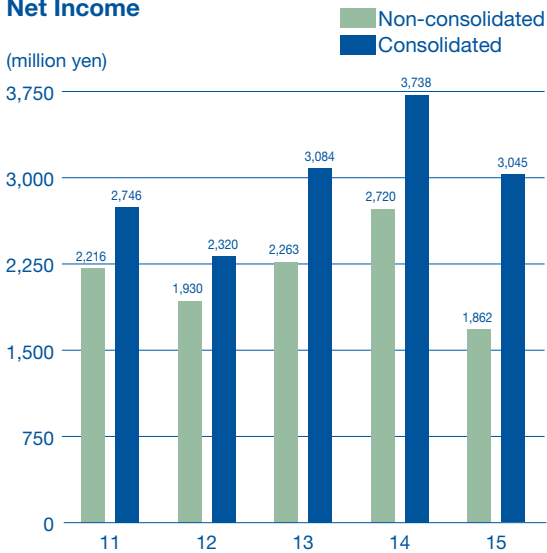
Net Sales



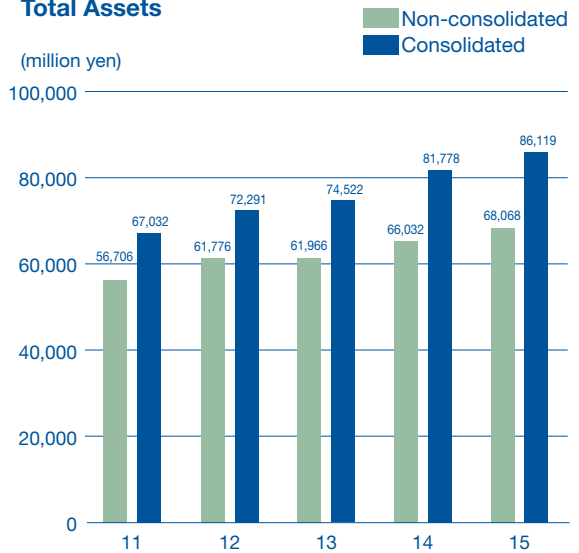
Operating Income



Net Income



Total Assets



- 1870** Began Operations.
Konishi's predecessor, Konishi-ya, started a pharmaceutical trading business at the present main office location.
The former head office (at the northeastern corner of Doshomachi and Sakaisuji streets) completed (1903).
- 1880s** Began importing and marketing liquors and canned goods.
- 1884** Started production of Asahi brand beer (a predecessor of the present Asahi Breweries, Ltd. product).
- 1888** Established Osaka Foreign Liquors Brewing Co., Ltd. for the manufacture and sales of beer, brandy, whisky and other alcoholic beverages.
Started production of "Akamon-jirushi" wine.
- 1912** The company decided to specialize in the wholesale of imported alcohols, industrial chemicals, foreign liquors and food products. It continued the production of alcohols for medical use.
- 1914** A limited partnership company was founded. The Chemicals Department and Foodstuffs Department were established to improve management and organization efficiency and to boost sales.
- 1925** The company incorporated under the name of K.K. Konishi Gisuke Shoten. It built a widespread reputation as a marketer of alcohol.
- 1940** Opened the Tokyo Branch Office.
- 1952** Began marketing the synthetic adhesive *BOND*.
Established the Tokyo Factory (later integrated into the Urawa Factory).
- 1956** Established the Tokyo Honjo Pharmaceutical Factory.
Resumed production of alcohols for medical use.
- 1957** Opened the Nagoya Representative Office (present Nagoya Branch Office).
- 1960** Opened the Sapporo Representative Office (present Sapporo Branch Office).
- 1962** Opened the Fukuoka Representative Office (present Fukuoka Branch Office).
- 1964** Established the Urawa Factory.
The Tokyo Factory became the first manufacturing facility in the industry authorized to bear the JIS (Japanese Industrial Standards) mark on its polyvinyl-acetate-based wood work adhesives.
- 1966** Opened the Hiroshima Representative Office (present Hiroshima Sales Office).
- 1969** The company was reorganized into two business units: the Chemical Products Division and the Bond Division.
- 1973** Established the Shiga Factory.
- 1976** Changed the company name to Konishi Co., Ltd.
Opened the Sendai Representative Office (present Sendai Sales Office) and the Kanazawa Representative Office (present Kanazawa Sales Office).
- 1978** Honored by the Osaka Chamber of Commerce and Industry for business achievements over the past 100 years.
Opened the Takamatsu Representative Office (present Takamatsu Sales Office).
- 1981** Established the Osaka Institute and Urawa Institute.
- 1982** Opened the Kita-Kanto Representative Office (present Takasaki Sales Office).
- 1986** Established the Tochigi Factory.
- 1988** Established Minakuchi Chemical Industry Co., Ltd.
- 1990** Merged with Bond Wax Co., Ltd.
The company was reorganized into three business units: the Bond Division, the Bond Wax Division and the Chemical Products Division.
- 1994** Listed on the Second Section of the Osaka Securities Exchange.
Opened the Atsugi Sales Office (present Yokohama Branch Office).
- 1995** The company was reorganized into a two-division system: the Bond Division and the Chemical Products Division.
- 1997** Obtained ISO 9001 certification for quality assurance.
Listed on the First Section of the Tokyo Stock Exchange.
Listed on the First Section of the Osaka Securities Exchange.
- 1998** Made Konishi Kouei Co., Ltd. a subsidiary.
- 1999** Established Bond Chemical Co., Ltd.
Made Maruyasu & Co., Ltd. a subsidiary.
- 2001** The Shiga Factory obtained ISO 14001 certification for environmental management systems.
The Old Konishi Office is designated an Important Cultural Property.
Established Bond Engineering Co., Ltd.
- 2002** All Konishi's factories in Japan obtained ISO 14001 certification for environmental management systems.
Made Japan Chemical Database Ltd. a subsidiary.
Subsidiary Maruyasu & Co., Ltd. established the wholly-owned subsidiary Taiwan Maruyasu & Co., Ltd.
- 2003** The Osaka Institute and Urawa Institute obtained ISO 14001 certification for environmental management systems.
Established Bond Sales Co., Ltd.
Made Sunrise MSI Corporation a subsidiary.
- 2004** Established Keyang Fine Chemical (Suzhou) Co., Ltd.
Established Konishi Co., Ltd. Shanghai.
- 2005** Renamed the Tokyo Branch Office to Tokyo Head Office, and adopted a dual head office system with the Osaka Head Office and Tokyo Head Office.
Moved the Ethanol Manufacturing Department to the Shiga Factory, and established the Shiga Ethanol Manufacturing Facility.
Established Kony Sunrise Trading Co., Ltd. (Thailand).
- 2007** Registered the consumer adhesive brand name "Wood Glue (BOND)" as a three-dimensional trademark.
- 2009** "BOND ULTRA-TAYOTO™ S-U" Series received the Technology Award from the Adhesion Society of Japan.
- 2010** Established the Research Institute.
The consumer adhesive "Wood Glue (BOND)" received the "2010 Good Design Long Life Design Award".
Established KF Instruments India Pvt. Ltd.
Established Konishi Lemindo Vietnam Co., Ltd.
- 2012** Self-declared conformance to ISO9001 quality assurance examination and registration system.
Established Bond Logistics Co., Ltd.
Opened the Tochigi Logistics Center.
- 2013** Established PT. Konishi Indonesia.
Made Kinki Reinforced Concrete Co., Ltd. a subsidiary.
- 2014** Made Yazawa Kagaku Kogyo Co., Ltd. a subsidiary.
Opened the Tochigi Sales Office.
Newly opened Plant 1 at the Tochigi Factory.
Opened the Shiga Logistics Center.
- 2015** Opened the Okinawa Sales Office.

Konishi Co., Ltd.

Osaka Head Office/ 1-7-1 Doshomachi, Chuo-ku, Osaka 541-0045, Japan

Phone: 81-6-6228-2811

Tokyo Head Office/ Takebashi Square, 2-3 Kandanihiki-cho, Chiyoda-ku, Tokyo 101-0054, Japan

Phone: 81-3-5259-5711

<http://www.bond.co.jp/>

Aノ 114-01

2015.01.
2015.04.
2015.06.
2015.09.
2015.11.